

## AIR OPERATED DIAPHRAGM PUMP LIFT STATIONS (AOPLS)



Shown: Duplex 1/2" Pumps with 32 gallon tank and 2" top connection. (DSPLS-32-05-TC)

Wastech standard air operated pump lift stations are designed for safely and efficiently transferring many liquids from waste water to slurries when a gravity drain is not possible.

- Simplex (one pump) or duplex (two pumps) configuration.
- Lift station is fabricated from corrosion resistant polypropylene and polyethylene.
- Multipoint level switch assembly with digital level display.
- All pump lift stations include a high-high level switch to activate a high level alarm.
- Each lift station has an air lock out tag out valve.
- Lift stations require Wastech industrial control panels (or equivalent).
- Larger pump and tank sizes, custom configurations available, call or e-mail sales.

### Standard Features

- Molded polyethylene tanks (16, 32 and 56 gallon tanks standard, custom sizes available)
- Polypropylene lid.
- All piping and valves are corrosion resistant plastic.
- One or two pumps—Air operated polypropylene double diaphragm style.
- 2" FNPT top mount inlet connection.
- 2" FNPT top mount vent connection.
- Hatch for maintenance access.
- Multipoint capacitance level switch assembly with digital display.

### Optional Features

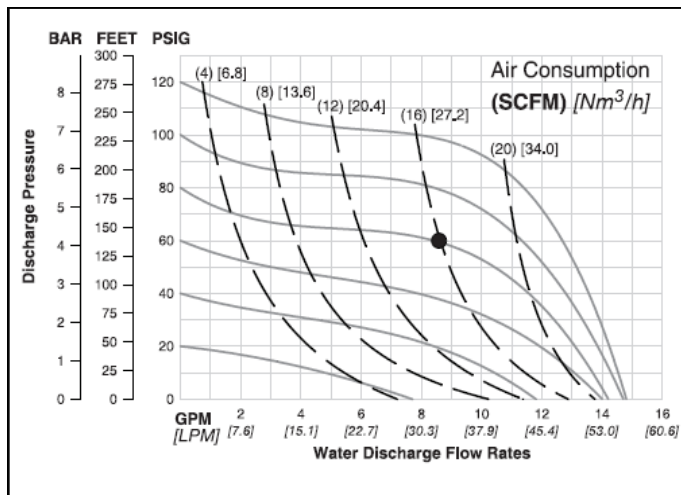
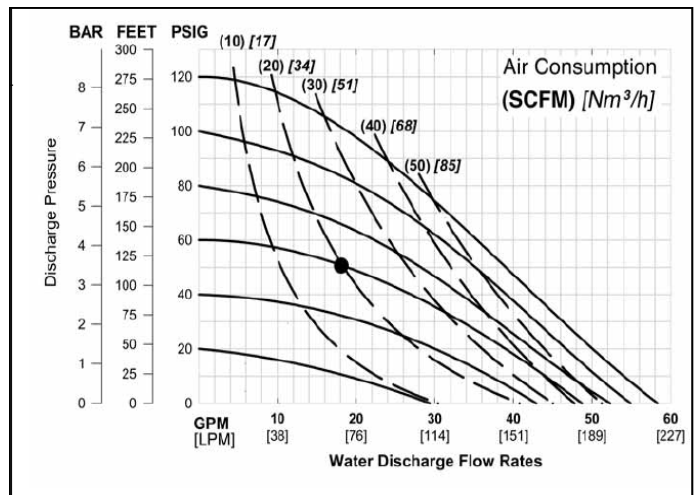
- Fabricated polypropylene double containment tank with float leak switch
- 6' pre-wired flex cable to connect to remote control panel
- Side inlet connection
- Seismic tie downs



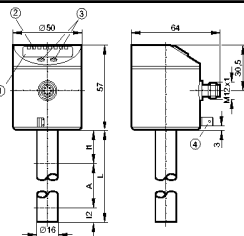
Shown: Duplex 1" Pumps with 32 gallon tank and 2" top connection. (DSPLS-32-10-TC)

**ORDERING INFORMATION**

<b>Number of Pumps (Choose One)</b>				
SSPLS	Simplex			
DSPLS	Duplex			
<b>Tank Volume (Choose One)</b>				
-16	16 Gallon Polyethylene Molded Tank			
-32	32 Gallon Polyethylene Molded Tank			
-56	56 Gallon Polyethylene Molded Tank			
<b>Pump Size (Choose One)</b>				
-005	1/2" Connection			
-010	1" Connection (Only on 32 and 56 gallon tanks)			
<b>Inlet Connection (Choose One)</b>				
-TC	Top Connection (2" FNPT)			
-SC-XX"	Side Connection (2" FNPT) – Specify Height From Bottom To Centerline			
<b>Options (Choose Any)</b>				
-PD	Pulsation Dampener w/PTFE Diaphragm			
-DC	Double Containment With Float Leak Switch			
-FC	6 FT Elec. Flex Conduit Between Lift Station and Control Panel			
-ST	Seismic Tie-Downs			
<b>Example Part Number</b>				
SSPLS	-15	-005	-TC	-P-DC
DSPLS	-56	-010	-SC-06"	-FC-DC-ST

**PUMP PERFORMANCE CURVES**

**1/2" Pump Performance Curve**

**1" Pump Performance Curve**
**LEVEL SWITCH TECHNICAL INFORMATION**

- Electronic level sensor
- Quick disconnect
- Probe length  
L = 18 in
- 3 operating outputs (OUT1...OUT3)
- 1 overflow output (OUT-OP)
- Indication of the level in inches or cm



- 4-digit alphanumeric display
- LEDs
- Programming buttons
- Housing connection (flat-pin connector 6.3 mm following DIN)

